



March 24, 2011

Contact: Pamela McKinzie, 509.954.4653

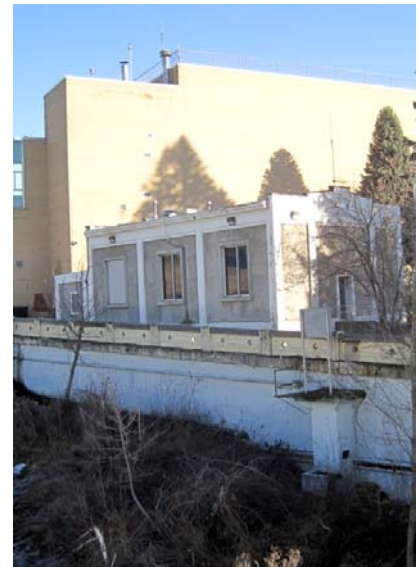
OLD FIRE DISPATCH BUILDING TO BE DEMOLISHED FRIDAY

The demolition of the old Fire Dispatch building adjacent to the former YMCA building in Riverfront Park is scheduled to begin tomorrow morning at 7:00 am.

If you have questions Pamela McKinzie, the project manager, will be on site tomorrow morning, or you can reach her on her cell phone at 509.954.4653.

About Spokane Parks and Recreation

City of Spokane Parks and Recreation is responsible for the professional management and prudent caretaking of more than 4,100 acres of developed parks and conservation land. The Golf Division maintains and operates four championship municipal golf courses, including Indian Canyon, Downriver, Esmeralda and the Creek at Qualchan. Park Operations has responsibility for the maintenance of all park land and park facilities in the City of Spokane including Riverfront Park, Manito Park, Gaiser Conservatory, the many city-wide gardens, and Finch Arboretum. Urban Forestry staff manages 50,000 street trees and another 28,000 trees on developed park land within the City of Spokane. The Recreation/Entertainment Division offers classes, special events, athletic leagues and activities for youth, teens, adults, seniors and persons with physical and mental disabilities. It also operates Riverfront Park attractions, activities and events, and provides support for community centers, senior centers, the Northeast Youth Center, Corbin Art Center and outdoor swimming pools. For more information please visit www.spokaneparks.org



###