



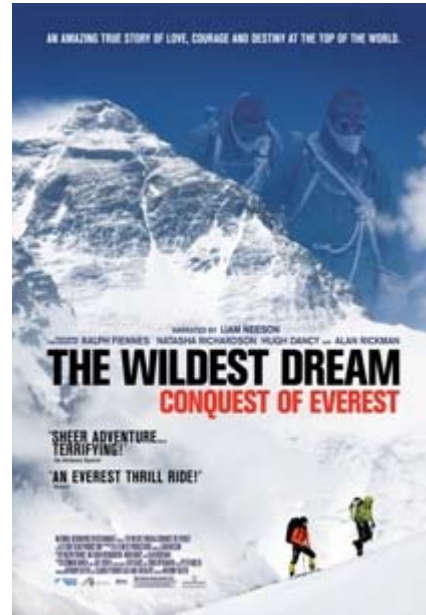
August 6, 2010

Contact: Debby Dodson, 625-6623

\*\*\*\*\*

**NATIONAL GEOGRAPHIC'S  
WILDEST DREAM:  
CONQUEST OF EVEREST  
STARTS TODAY**

\*\*\*\*\*



This Special Engagement IMAX feature shows daily at 1pm, 4pm, 6pm and 8pm. For more information go to [www.spokanriverfrontpark.com](http://www.spokanriverfrontpark.com)

**SPECIAL ENGAGEMENT**

Rated G - Runtime 90 minutes

Eighty-five years after George Mallory s final attempt to summit Mount Everest, The Wildest Dream explores Mallory s obsession with becoming the first person to reach the highest place on Earth. Told through the explorer s poignant and evocative letters to his wife, Ruth, previously unseen photos and film archive from 1924 (restored from the original nitrate especially for the film), dramatization and a modern-day expedition retracing the original route taken in 1924, Mallory s incredible adventure lives again. The expedition was led by renowned mountaineer Conrad Anker, whose life became inextricably linked with Mallory s after he found Mallory s body on Everest in 1999. Using replica 1920s-era clothing and equipment, Anker sets out to solve the great mystery of whether Mallory succeeded in summiting Everest before he died he was last seen just 800 feet from the summit before the clouds closed in and he disappeared into legend. The most heartbreaking clue: All of Mallory s belongings were found intact on his body, except the photograph of his beloved Ruth, which he promised to leave at the top of the world if he succeeded.

Directed by award-winning filmmaker Anthony Geffen and produced by Geffen and Claudia Perkins, *The Wildest Dream* is narrated by Liam Neeson and features the voices of Ralph Fiennes as George Mallory, the late Natasha Richardson as Ruth Mallory, Hugh Dancy as Mallory's fellow climber Sandy Irvine and Alan Rickman as Noel Odell, the last person to see Mallory alive. Mike Medavoy is the executive producer. Peter Miller is the editor, and Mark Halliley is the edit producer and writer. The directors of photography are Ken Sauls and Chris Openshaw. Joel Douek composed the music, which was recorded with the Prague Philharmonic Orchestra and includes the song *Edge of Heaven* by Lisbeth Scott.

For more information go to [www.spokaneriverfrontpark.com](http://www.spokaneriverfrontpark.com)

###